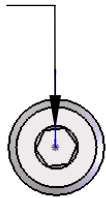
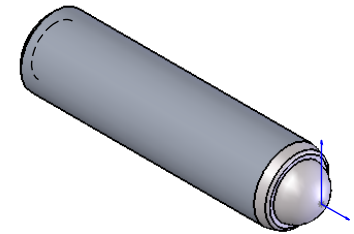
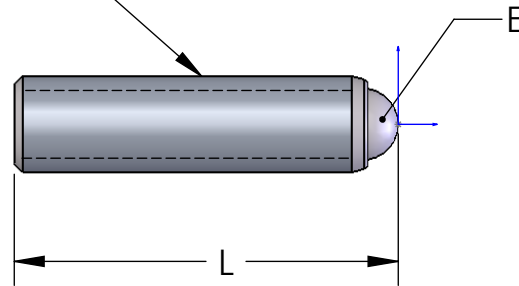


3/32" x ∇ .090"
Standard



THREAD



ISO VIEW

SCREW SPECIFICATIONS

PART#	L -length	E-ball diameter	C-hex broach (only metric sizes)	D-depth	TOLERANCE +/-	THREAD	QUANTITY

Please fill out the table above according to your specs.

The screws and bushings are also available as matched sets

Notes:

- Threads available:
80TPI, 100TPI, 127TPI,
170TPI, 200TPI, .2mm, .1mm
- Max screw length is 7.0"
- Max OD .750"
- Ball Diameter (E):
3/16" Dia. Screw = .156" Dia. Ball
1/4" Dia. Screw = .187" Dia. Ball

Note: Screws and bushings with threads from 170TPI up to .1mm are sold by sets only.

MATERIAL: 18-8 (303 SS)

PROPRIETARY AND CONFIDENTIAL
THE INFORMATION CONTAINED IN THIS DRAWING IS THE SOLE PROPERTY OF KOZAK PRECISION PRODUCTS CORP. ANY REPRODUCTION IN PART OR AS A WHOLE WITHOUT THE WRITTEN PERMISSION OF KOZAK PRECISION PRODUCTS CORP. IS PROHIBITED.

		DIMENSIONS ARE IN INCHES TOLERANCES: FRACTIONAL \pm ANGULAR: MACH \pm BEND \pm TWO PLACE DECIMAL \pm THREE PLACE DECIMAL \pm		NAME	DATE	ADJUSTMENT SCREW
		MATERIAL --		Juan P	9/12/09	
		FINISH --		CHECKED		
NEXT ASSY	USED ON			ENG APPR.		
APPLICATION		DO NOT SCALE DRAWING		MFG APPR.		
				Q.A.		SIZE
				COMMENTS:		DWG. NO.
						REV.
						SCALE: 2:1
						WEIGHT:
						SHEET 1 OF 1