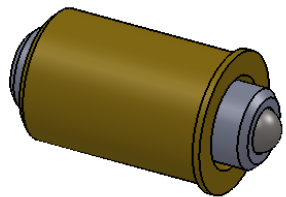
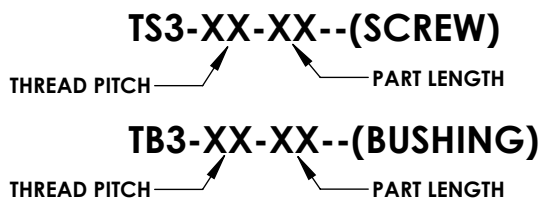


METRIC SCREW SPECIFICATIONS		
PART#	LENGTH (L)	THREAD TYPE
TS3-XX-8	8mm (.315in)	1 or 2 or 3
TS3-XX-10	10mm (.394in)	1 or 2 or 3
TS3-XX-12	12mm (.472in)	1 or 2 or 3
TS3-XX-15	15mm (.590in)	1 or 2 or 3
TS3-XX-20	20mm (.787in)	1 or 2 or 3
TS3-XX-25	25mm (.984in)	1 or 2 or 3
TS3-XX-30	30mm (1.181in)	1 or 2 or 3
TS3-XX-33	33mm (1.30in)	1 or 2 or 3
TS3-XX-36	36mm (1.417in)	1 or 2 or 3
TS3-XX-39	39mm (1.535in)	1 or 2 or 3
TS3-XX-42	42mm (1.653in)	1 or 2 or 3
TS3-XX-45	45mm (1.772in)	1 or 2 or 3
TS3-XX-48	48mm (1.890in)	1 or 2 or 3
TS3-XX-51	51mm (2.0in)	1 or 2 or 3



METRIC SCREWS/BUSHINGS

PART# FORMAT



METRIC BUSHING SPECIFICATIONS		
PART#	LENGTH (L)	THREAD TYPE
TB3-XX-5	5mm (.197in)	1 or 2 or 3
TB3-XX-7	7mm (.276in)	1 or 2 or 3
TB3-XX-9	9mm (.354in)	1 or 2 or 3
TB3-XX-12	12mm (.472in)	1 or 2 or 3

THREAD TYPES

- 1 M3x.25 (25)
- 2 M3x.2 (20)
- 3 M3x.1 (10)

EXAMPLE:

TS3-10-20
 TS3-Screw M3
 10-.1mm pitch
 20-20mm long

TO DESIGN YOUR OWN SCREW/BUSHING PLEASE CLICK "here"

PROPRIETARY AND CONFIDENTIAL
 THE INFORMATION CONTAINED IN THIS DRAWING IS THE SOLE PROPERTY OF <INSERT COMPANY NAME HERE>. ANY REPRODUCTION IN PART OR AS A WHOLE WITHOUT THE WRITTEN PERMISSION OF <INSERT COMPANY NAME HERE> IS PROHIBITED.

NEXT ASSY	USED ON
APPLICATION	

UNLESS OTHERWISE SPECIFIED:	NAME	DATE
DIMENSIONS ARE IN INCHES TOLERANCES: FRACTIONAL ± ANGULAR: MACH ± BEND ± TWO PLACE DECIMAL ± THREE PLACE DECIMAL ±	DRAWN	
	CHECKED	
	ENG APPR.	
	MFG APPR.	
INTERPRET GEOMETRIC TOLERANCING PER:	Q.A.	
MATERIAL	COMMENTS: BUSHING MATERIAL: -360 HARD BRASS H02 -544 PHOSPHOR BRONZE H04 SCREW MATERIAL: -303 STAINLESS STEEL	
FINISH		

TITLE:		
SIZE	DWG. NO.	REV
A	METRIC SCREWS/BUSHINGS	
SCALE: 4:1	WEIGHT:	SHEET 1 OF 1