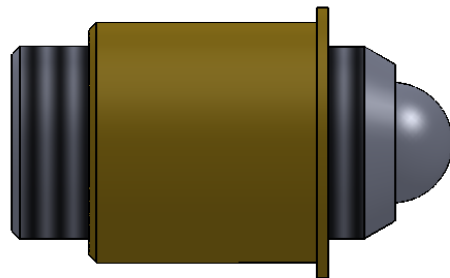


SCREW	
Part Number	Length "A" Inches
TS250-100-313	0.313
TS250-100-375	0.375
TS250-100-438	0.438
TS250-100-500	0.500
TS250-100-625	0.625
TS250-100-750	0.750
TS250-100-1000	1.000
TS250-100-1125	1.125
TS250-100-1250	1.250
TS250-100-1500	1.500
TS250-100-1750	1.750
TS250-100-2000	2.000
TS250-100-2125	2.125
TS250-100-2250	2.250
TS250-100-2500	2.500
TS250-100-2750	2.750
TS250-100-3000	3.000
TS250-100-3125	3.125
TS250-100-3250	3.250
TS250-100-3500	3.500
TS250-100-3750	3.750
TS250-100-4000	4.000

For lengths up to 6", please click [here](#)



TS/B250-100

BUSHING	
Part Number	Length "B" Inches
TB250-100-313	.313
TB250-100-438	.438
TB250-100-625	.625
TB250-100-750	.750

For lengths up to 6", please click [here](#)

		UNLESS OTHERWISE SPECIFIED:	NAME	DATE	KOZAK PRECISION PRODUCTS CORP.		
		DIMENSIONS ARE IN INCHES TOLERANCES: FRACTIONAL ±.020 ANGULAR: MACH ± BEND ± TWO PLACE DECIMAL ±.010 THREE PLACE DECIMAL ±.005	DRAWN			TITLE:	
		INTERPRET GEOMETRIC TOLERANCING PER:	CHECKED		Threaded Screw & Bushing 1/4"-100		
		MATERIAL Screw: 18-8 (303) S.S. Bushing: Brass H02	ENG APPR.				
NEXT ASSY	USED ON		MFG APPR.		SIZE	DWG. NO.	REV
APPLICATION		DO NOT SCALE DRAWING	Q.A.		A	TS/B250-100	A
			COMMENTS:		SCALE: 4:1	WEIGHT:	SHEET 3 OF 3

PROPRIETARY AND CONFIDENTIAL
THE INFORMATION CONTAINED IN THIS DRAWING IS THE SOLE PROPERTY OF KIZAK PRECISION PRODUCTS CORP. ANY REPRODUCTION IN PART OR AS A WHOLE WITHOUT THE WRITTEN PERMISSION OF KIZAK PRECISION PRODUCTS CORP. IS PROHIBITED.