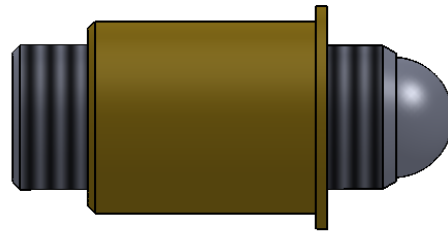


SCREW	
Part Number	Length "A" Inches
TS187-100-313	0.313
TS187-100-375	0.375
TS187-100-438	0.438
TS187-100-500	0.500
TS187-100-625	0.625
TS187-100-750	0.750
TS187-100-1000	1.000
TS187-100-1125	1.125
TS187-100-1250	1.250
TS187-100-1500	1.500
TS187-100-1750	1.750
TS187-100-2000	2.000
TS187-100-2125	2.125
TS187-100-2250	2.250
TS187-100-2500	2.500
TS187-100-2750	2.750
TS187-100-3000	3.000
TS187-100-3125	3.125
TS187-100-3250	3.250
TS187-100-3500	3.500
TS187-100-3750	3.750
TS187-100-4000	4.000

For lengths up to 6", please click [here](#)



TS/B187-100

BUSHING	
Part Number	Length "B" Inches
TB187-100-313	.313
TB187-100-438	.438
TB187-100-625	.625
TB187-100-750	.750

For lengths up to 6", please click [here](#)

PROPRIETARY AND CONFIDENTIAL
 THE INFORMATION CONTAINED IN THIS DRAWING IS THE SOLE PROPERTY OF KOZAK PRECISION PRODUCTS CORP. ANY REPRODUCTION IN PART OR AS A WHOLE WITHOUT THE WRITTEN PERMISSION OF KOZAK PRECISION PRODUCTS CORP. IS PROHIBITED.

		UNLESS OTHERWISE SPECIFIED:		NAME	DATE	KOZAK PRECISION PRODUCTS CORP.
		DIMENSIONS ARE IN INCHES TOLERANCES: FRACTIONAL ±.020 ANGULAR: MACH ± BEND ± TWO PLACE DECIMAL ±.010 THREE PLACE DECIMAL ±.005	DRAWN			
		INTERPRET GEOMETRIC TOLERANCING PER:	CHECKED			
		MATERIAL Screw: 18-8 (303) S.S. Bushing: Brass H02	ENG APPR.			
NEXT ASSY	USED ON		MFG APPR.			SIZE A
APPLICATION		DO NOT SCALE DRAWING	Q.A.			DWG. NO. TS/B187-100
			COMMENTS:			REV A
						SCALE: 4:1 WEIGHT: